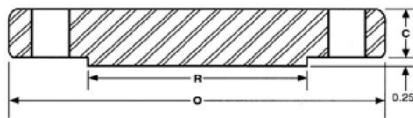


ANSI B16.5 Class 1500 Blind Flanges



Nominal Size	Outside Diameter O	Thickness C	Dia Of Raised Face R	No. Of Holes	Dia. Of Holes	Dia. Of Bolts	Bolt Circle Diameter	Approx. Weight (Lbs)
1/2"	4.75	0.88	1.38	4.00	0.88	3/4	3.25	4
3/4"	5.13	1.00	1.69	4.00	0.88	3/4	3.50	6
1"	5.88	1.13	2.00	4.00	1.00	7/8	4.00	8
1 1/4"	6.25	1.13	2.50	4.00	1.00	7/8	4.38	9
1 1/2"	7.00	1.25	2.88	4.00	1.13	1	4.88	13
2"	8.50	1.50	3.63	8.00	1.00	7/8	6.50	25
2 1/2"	9.63	1.63	4.13	8.00	1.13	1	7.50	35
3"	10.50	1.88	5.00	8.00	1.25	1 1/8	8.00	48
4"	12.25	2.13	6.19	8.00	1.38	1 1/4	9.50	73
5"	14.75	2.88	7.31	8.00	1.63	1 1/2	11.50	140
6"	15.50	3.25	8.50	12.00	1.50	1 3/8	12.50	160
8"	19.00	3.63	10.63	12.00	1.75	1 5/8	15.50	300
10"	23.00	4.25	12.75	12.00	2.00	1 7/8	19.00	510
12"	26.50	4.88	15.00	16.00	2.13	2	22.50	690
14"	29.50	5.25	16.25	16.00	2.38	2 1/4	25.00	975
16"	32.50	5.75	18.50	16.00	2.63	2 1/2	27.75	1300
18"	36.00	6.38	21.00	16.00	2.88	2 3/4	30.50	1750
20"	38.75	7.00	23.00	16.00	3.13	3	32.75	2225
24"	46.00	8.00	27.25	16.00	3.63	3 1/2	39.00	3625

TECH TUBES & FITTINGS

Phone: +91-22-6743 6862 ; Email: sales@techtubes.in ; Web:

www.techtubes.in

Information in this catalog was compiled from industry sources that Tech Tubes & Fitting believes to be reliable.

We, however, do not guarantee the accuracy of this data.

ALL DIMENSIONS IN INCHES