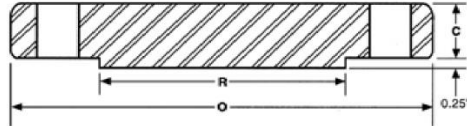


# ANSI B16.5 Class 400 Blind Flanges



Nominal Size	Outside Diameter O	Thickness C	Dia Of Raised Face R	No. Of Holes	Dia. Of Holes	Dia. Of Bolts	Bolt Circle Diameter	Approx. Weight (Lbs)
1/2"	3.75	0.56	1.38	4	0.63	1/2	2.63	2
3/4"	4.63	0.63	1.69	4	0.75	5/8	3.25	3
1"	4.88	0.69	2.00	4	0.75	5/8	3.50	4
1 1/4"	5.25	0.81	2.50	4	0.75	5/8	3.88	5
1 1/2"	6.13	0.88	2.88	4	0.88	3/4	4.50	8
2"	6.50	1.00	3.63	8	0.75	5/8	5.00	10
2 1/2"	7.50	1.13	4.13	8	0.88	3/4	5.88	15
3"	8.25	1.25	5.00	8	0.88	3/4	6.63	20
3 1/2"	9.00	1.38	5.50	8	1.00	7/8	7.25	29
4"	10.00	1.38	6.19	8	1.00	7/8	7.88	33
5"	11.00	1.50	7.31	8	1.00	7/8	9.25	44
6"	12.50	1.63	8.50	12	1.00	7/8	10.63	61
8"	15.00	1.88	10.63	12	1.13	1	13.00	100
10"	17.50	2.13	12.75	16	1.25	1 1/8	15.25	155
12"	20.50	2.25	15.00	16	1.38	1 1/4	17.75	225
14"	23.00	2.38	16.25	20	1.38	1 1/4	20.25	290
16"	25.50	2.50	18.50	20	1.50	1 3/8	22.50	370
18"	28.00	2.63	21.00	24	1.50	1 3/8	24.75	455
20"	30.50	2.75	23.00	24	1.63	1 1/2	27.00	587
24"	36.00	3.00	27.25	24	1.88	1 3/4	32.00	890

## TECH TUBES & FITTINGS

Phone: +91-22-6743 6862 ; Email: [sales@techtubes.in](mailto:sales@techtubes.in) ;

Web: [www.techtubes.in](http://www.techtubes.in)

Information in this catalog was compiled from industry sources that Tech Tubes & Fitting believes to be reliable. We, however, do not guarantee the accuracy of this data.

**ALL DIMENSIONS IN INCHES**