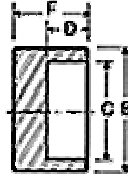


SW CAP



Class 3000	Size	1/8	1/4	3/8	1/2	3/4	1	1 1/4	1 1/2	2	2 1/2	3	4
	B	3/4	7/8	1 1/16	1 1/4	1 1/2	1 13/16	2 1/4	2 1/2	3	3 5/8	4 5/16	5 1/2
	C	0.420	0.555	0.690	0.855	1.065	1.330	1.675	1.915	2.406	2.906	3.535	4.545
	D	7/16	7/16	7/16	1/2	9/16	5/8	11/16	3/4	7/8	7/8	1	1 1/8
	F	11/16	3/4	3/4	7/8	1	1 1/16	1 3/16	1 1/4	1 1/2	1 9/16	1 13/16	2 1/16
	Wt	0.063	0.063	0.125	0.188	0.313	0.375	0.813	1.125	1.688	3.000	3.625	6.688
Class 6000	Size	1/8	1/4	3/8	1/2	3/4	1	1 1/4	1 1/2	2	2 1/2	3	4
	B	-	-	-	1 1/2	1 3/4	2 1/4	2 1/2	3	3 5/8	4 1/4	5	6 1/4
	C	-	-	-	0.855	1.065	1.330	1.675	1.915	2.406	2.906	3.535	4.545
	D	-	-	-	1/2	9/16	5/8	11/16	3/4	7/8	7/8	1	1 1/8
	F	-	-	-	1	1 1/16	1 1/4	1 5/16	1 3/8	1 5/8	1 11/16	1 15/16	2 5/16
	Wt	-	-	-	0.375	0.500	1.125	1.125	2.250	3.500	5.625	6.000	13.500

Information in this catalog was compiled from industry sources that Tech Tubes & Fitting believes to be reliable. We, however, do not guarantee the accuracy of this data.

ALL DIMENSIONS IN INCHES